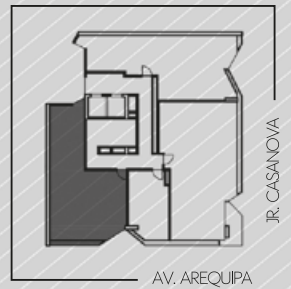


▶ ÁREA

TOTAL: 65.00 M<sup>2</sup>



FLAT TIPO 1



AV. AREQUIPA

[TORRE II]

[PRO  
YEC  
TO]

PROYECTO ARQUITECTÓNICO :



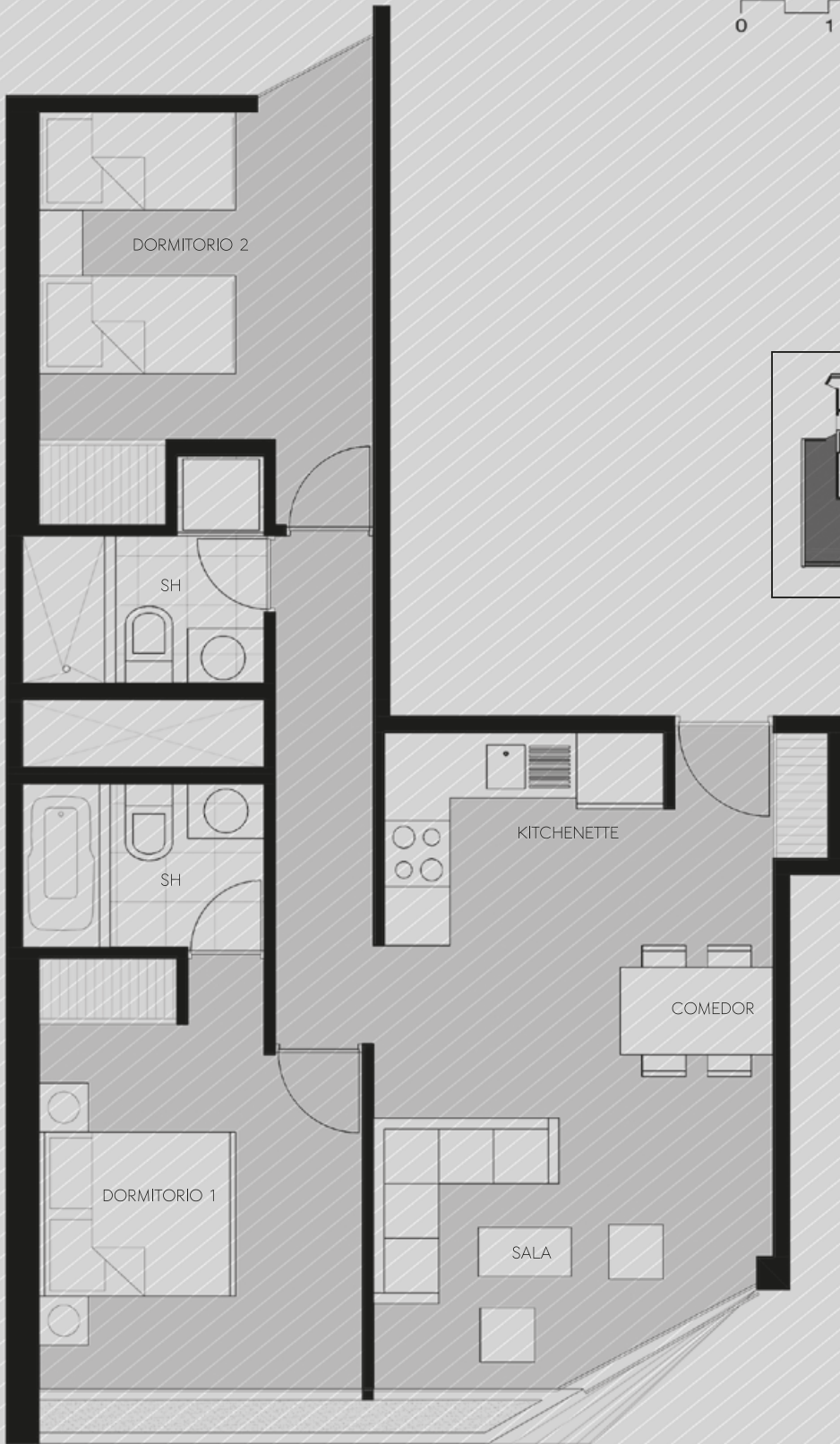
BARCLAY & CROUSSE  
arquitectura  
www.barclaycrousse.com

FINANCIÁ:

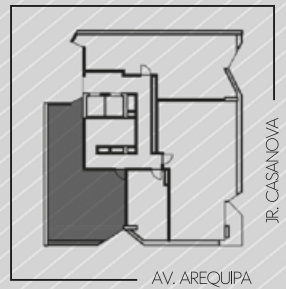


► ÁREA

TOTAL: 65.80 M<sup>2</sup>



FLAT TIPO 1



AV. AREQUIPA

[TORRE II]

[PROYECTO]

PROYECTO ARQUITECTÓNICO :



BARCLAY & CROUSSE  
arquitectura  
www.barclaycrousse.com

FINANCIÁ:



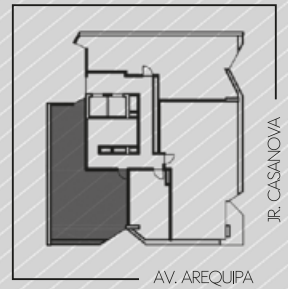
LA IMÁGENES CONTENIDAS EN LA PRESENTA PIEZA PUBLICITARIA, PUEDEN VARIAR POR RAZONES DE TIPO COMERCIAL, TÉCNICAS O MUNICIPALES.



GRUPO INMOBILIARIO **FLAT**



FLAT TIPO 1

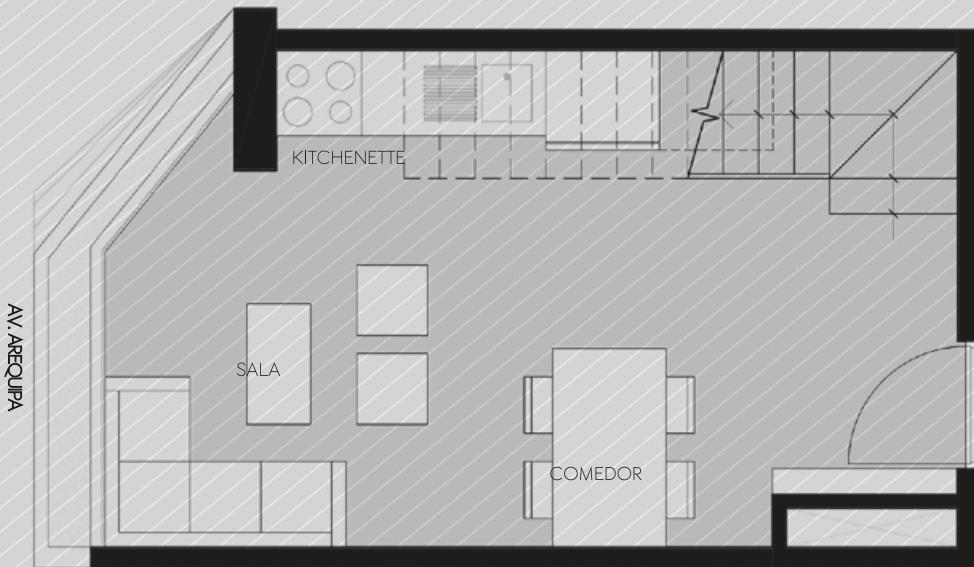
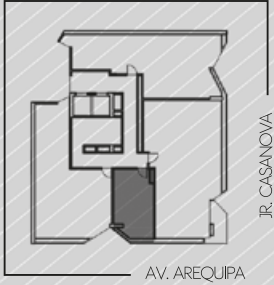


AV. AREQUIPA

[TORREII]



FLAT TIPO 2

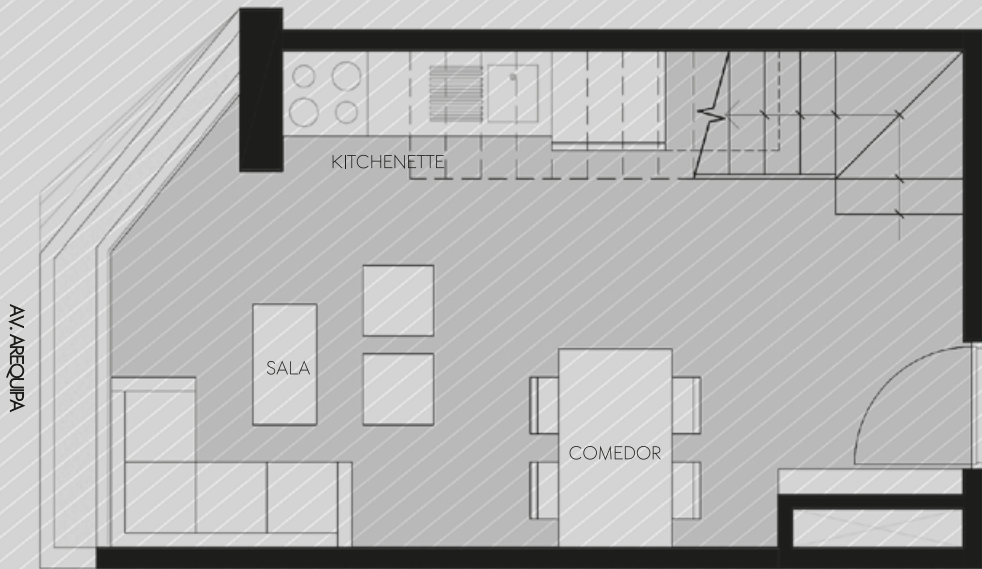
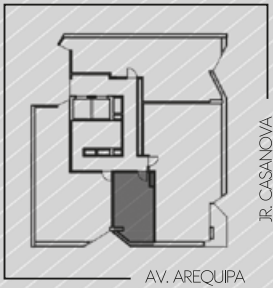


[TORREII]





FLAT TIPO 2



[TORREII]



[PROYECTO]

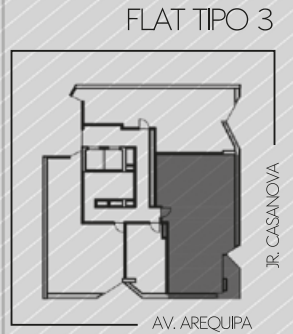
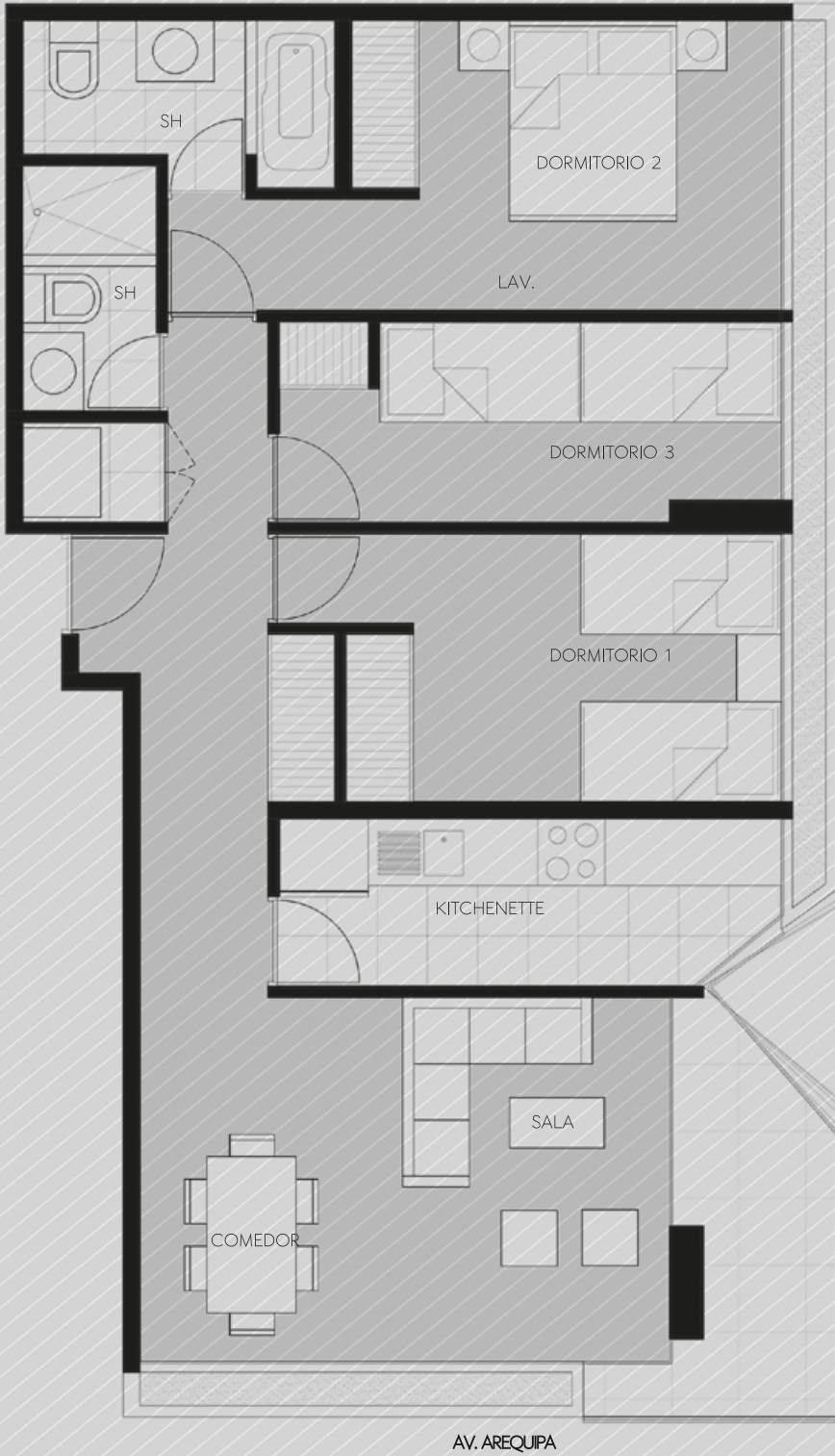
PROYECTO ARQUITECTÓNICO :



BARCLAY & CROUSSE  
arquitectura  
www.barclaycrousse.com

FINANCIA:

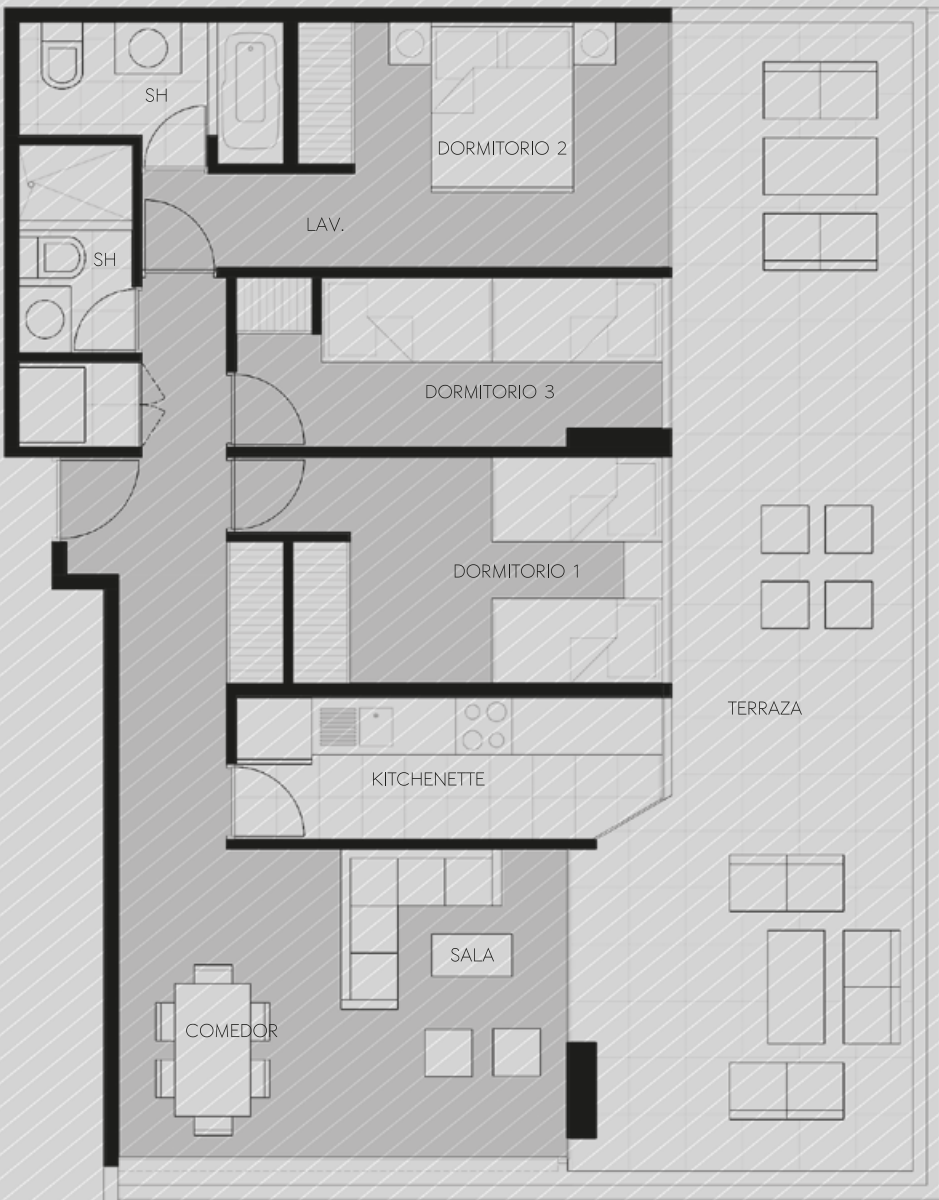
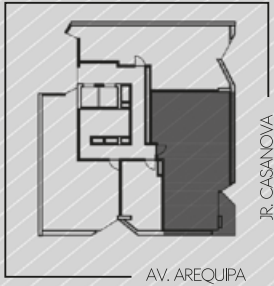




[TORREIL]



FLAT TIPO 3



[TORREII]

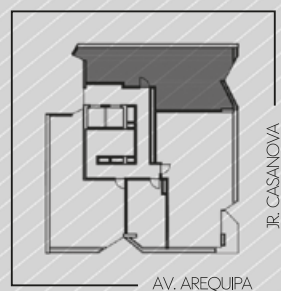
R. CASANOVA

▶ ÁREA

TOTAL: 66.00 M<sup>2</sup>



FLAT TIPO 4



JR. CASANOVA

[TORRENT]

[PRO  
YEC  
TO]

PROYECTO ARQUITECTÓNICO :



BARCLAY&CROUSSE  
ARCHITECTURE  
www.barclaycrousse.com

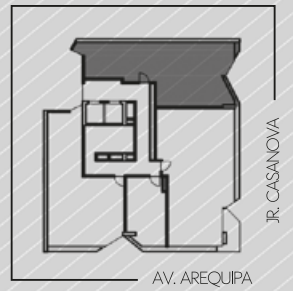
FINANCIÁ:







FLAT TIPO 4



[TORREII]

JR. CASANOVA

[PROYECTO]

PROYECTO ARQUITECTÓNICO :



BARCLAY & CROUSSE  
arquitectura  
www.barclaycrousse.com

FINANCIÁ:



GRUPO INMOBILIARIO **FLAT**

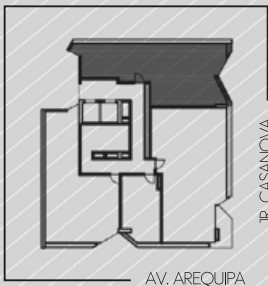
# PENTHOUSE

► ÁREA

TOTAL: 134.50 M2



PENTHOUSE



[TORREII]